



55

*years
of Impacting Lives*

2019 ANNUAL REPORT

SCAN TO DONATE

Download any of the apps and donate to support the cancer community. All proceeds will be channelled to programmes and services conducted by Singapore Cancer Society.



SINGAPORE CANCER SOCIETY

Singapore Cancer Society (SCS) was established in 1964 and has been actively serving the community for more than 55 years. SCS was registered as a society in 1984 and accorded IPCs (Institutions of a Public Character) status as a charity in 1995 by the Ministry of Health (MOH). SCS is a member of the National Council of Social Service (NCSS), a founding member of the Singapore Hospice Council (SHC), and a member of the Union of International Cancer Control (UICC). Being self-funded, the Society is dependent on public donations to provide quality services to needy cancer patients, their families, and members of the public.

Charity Registration Number: 0053

UEN / IPC Number: S65SS0033F

Statutory Auditor: RSM Chio Lim LLP

Internal Auditor: Baker Tilly TFW

Legal Firm: RHTLaw Taylor Wessing LLP

Honorary Legal Counsel: Mr Ang I-Ming

Registered Address: 15 Enggor Street Realty Centre, #04-01 Singapore 079716

Hotline: 1800-SCS(727)-3333

SINGAPORE CANCER SOCIETY

55 years of Impacting Lives

VISION

To be Singapore's leading Charity in the fight for a cancer-free community.

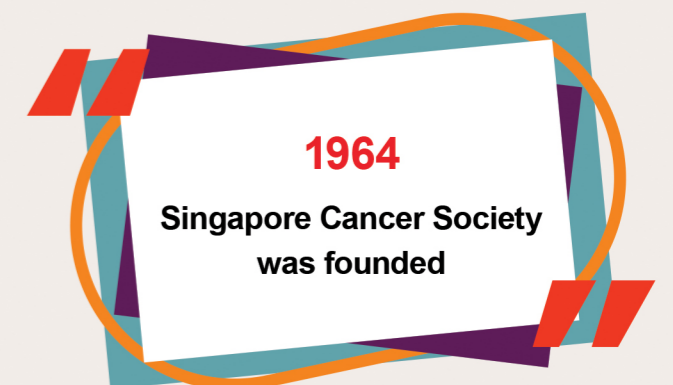
MISSION

To Minimise Cancer and Maximise Lives through effective programmes.



STRATEGIC THRUSTS

- Reduce Cancer Incidence
- Increase Survivor Rate
- Improve Quality of Life
- Greater Community Action





Mr Wee Leong How,
Chairman



Mr Albert Ching,
Chief Executive Officer

CHAIRMAN AND CEO MESSAGE

2019 has been a significant year for the Singapore Cancer Society (SCS) as we commemorate 55 years of impacting lives. Since we began in 1964, over 100,000 individuals annually have benefited from our outreach and support. SCS strives to minimise cancer and maximise lives through a holistic care system, which is built on effective programmes and services.

SCS supports cancer patients and their families, especially financially challenged individuals, through cancer treatment subsidies, financial and welfare aid, hospice home care services, rehabilitation programmes and support groups for cancer survivors, and much more. We will continue to contribute in four main thrusts to: Reduce the incidence of cancer; Increase survival rates; Improve the quality of life; and Rally the community to take proactive action in the collective fight against cancer.

To mark SCS' 55th anniversary, several new initiatives were launched to serve the cancer community.

Intensifying our public education and cancer prevention efforts, SCS stepped up to raise even greater awareness about the cause in Singapore and highlight our efforts globally, through coordination and championing of several initiatives with various healthcare institutions, government institutions, schools, corporate partners, and social media influencers for 2019.

As part of our efforts to reduce cancer incidence and improve cancer care, SCS partnered the National Cancer Centre Singapore (NCCS) to provide Singaporeans greater access to integrated cancer care. This key collaboration is the upstream prevention effort championed by both parties through a dedicated Cancer Genetics Service Screening Programme that will benefit all Singaporeans, with more support for the financially needy. To strengthen the seamless integrated care to the community, SCS will be co-locating with NCCS at the new NCCS building by 2022. In addition, this partnership will also provide a continuum of cancer care beyond treatment that is

accessible, affordable and of quality. A dedicated cancer rehabilitation centre is planned to be developed to provide a one-stop holistic care plan for cancer patients at NCCS, supported by a multi-disciplinary team that includes oncologists, surgeons, rehabilitation physicians, allied health professionals and psychosocial support staff.

SCS also partnered the National University Cancer Institute, Singapore (NCIS), to intensify screening efforts. Faecal Immunochemical Test (FIT) kit distribution has been integrated into their community health programmes throughout the year.

SCS also rolled out Human Papillomavirus (HPV) testing at no cost to all Singaporean/ PR women aged 30 to 69, an initiative aimed to promote early cancer detection and increase survival rates. This is expected to benefit over 1.5 million individuals.

The digitisation movement is quickly changing the healthcare landscape. SCS has leveraged on technology to meet the rising demand of cancer care in Singapore. With cancer incidence on the rise, SCS understands the need for providing timely care services to the cancer community. A chatbot by OneConnect has been developed to identify the common questions and answers relating to cancer and SCS. Based on SCS historical call records and knowledge and expertise on cancer matters provided by NCCS, patients will have easier and greater access to medical care. SCS will continue to explore opportunities to ride the technology wave and intensify our fight against cancer.

Cancer diagnosis can impose a tremendous financial burden on patients and families. Every year, SCS needs to raise at least \$20 million to drive programmes and services and create new initiatives to continue improving the lives of the cancer community. SCS cannot do it on our own. Many partners and volunteers are needed

as SCS strives to ensure holistic support is rendered to help patients cope during their cancer journey.

SCS and AstraZeneca inked a Memorandum of Understanding (MoU) to further strengthen efforts to jointly improve the quality of life for people impacted by cancer through public education, awareness campaigns, and funding of welfare programmes. Our new initiatives bolster our existing programmes and services in serving the cancer community. Our fight against cancer is also about helping cancer patients achieve a new state of normalcy, in spite of the disease. We strive to bridge service gaps and smooth the path towards life after cancer.

SCS also released a web film series on cancer. Created and produced by veteran filmmaker Daniel Yun, the 5-episode film series "I Do" is a love story that interweaves real-life trials and triumphs in the cancer journey through interviews with our cancer survivors.

As such, it is with a clear sense of these responsibilities that the Society seeks your support. In solidarity with our beneficiaries, we would also like to express our gratitude to you – our supporters, donors, partners, volunteers, Council members, management, and staff – for your contributions. Our work cannot bear fruit without your generosity.

On behalf of SCS and our beneficiaries, we extend our heartfelt appreciation to all those who were part of our achievements and milestones over the past 55 years. The continued and generous support of all our partners, donors, and volunteers has led to what the Society has become today. Community support is extremely crucial to SCS in expanding and strengthening the outreach in the collective fight against cancer. Our strength in numbers is testament that no one fights cancer alone.

HIGHLIGHTS

Aligning to the impact framework with emphasis on being outcome focused, SCS has developed various programmes and services in collaboration with partners to achieve the 4 strategic goals. This segment highlights the following:

- Improved survival rates due to **early detection of cancer** from SCS screening programmes
- **Stronger community engagement and increased funds raised** to support more people impacted by cancer through SCS' outreach and fundraising programmes
- **Promotion of healthier lifestyle and regular screening** to reduce cancer incidence through SCS cancer control and prevention programmes

EARLY DETECTION OF CANCER

The data below shows that screening tests such as the Faecal Immunochemical Test (FIT), Papanicolaou Test (Pap Test) and Mammogram effectively help early detection of cancer. With that, SCS will continue to intensify its outreach programme to the public to increase screening take-up rate.

Screening Test/Yr.	SCS Screened Participants	SCS		National Avg.
		Total no. of Screened detected Cancer cases	% of Early Stage (Stage 1)	% of Early Stage (Stage 1)
FIT (Screen for Colorectal Ca)				
2015	50,117	44	52.3%	51.1%
2016	53,935	23	56.5%	52.2%
Mammogram (Screen for Breast Ca)				
2014	12,117	14	71.4%	64.8%
2015	8,132	16	68.8%	65.0%
2016	19,205	26	57.7%	67.4%
Pap Test (Screen for Cervical Ca)				
2014	15,010	1	100%	88.9%
2015	15,057	4	100%	85.7%
2016	17,442	4	100%	90.0%
By Year				
2015	73,306	64	59.4%	62.5%
2016*	90,582	53	60.3%	65.4%

Source: National Registry of Diseases Office dataset matched with SCS screened participants

NOTE:
– Data presented are screened data, Ca detected through non-screening (Patients citing they experienced symptoms that trigger doctor's immediate investigation) are not presented.
– Due to small sample, statistical comparison to national average cannot be made.
– *2016 data may not include the full year's Ca diagnosed cases due to investigation time. E.g. Screened in late 2016, follow up done in 2017.

STRONGER COMMUNITY ENGAGEMENT AND INCREASED FUNDS RAISED

2019 saw an increase in sustained volunteering (volunteers who returned from prior year) by 25% from 2018 and funds raised to support more people impacted by cancer.



FUNDS RAISED FROM SCS FLAGSHIP EVENTS

	2019	2018
Race Against Cancer	\$ 1,087,140	\$ 1,000,539
Relay For Life	\$ 1,029,115	\$ 857,542
Total funds raised	\$ 2,116,255	\$ 1,958,081

Note: Amount excluded sponsorship-in-kind

PEOPLE WHO BENEFITED FROM SCS PROGRAMMES AND SERVICES

	2019	2018 [#]
Beneficiaries*	4,218	3,881
Public Education and Outreach	25,936	15,028
Screening Participants	100,427 [^]	108,606
• Faecal Immunochemical Test Kits (FIT) ¹	68,541	77,648
• Pap Test / HPV Test ²	7,151 [^]	6,984
• Mammogram ³	24,643 [^]	23,888
• Breast Self-Examination	92	86

[#]Numbers from 2018 have been updated due to time-lag from various SCS programmes and campaigns
^{*}Beneficiaries comprise of individuals who benefited from SCS' welfare programmes and initiatives, support group members, rehabilitation clients, and hospice care patients
¹Based on participants screened for Colorectal Cancer
²Screening for Cervical Cancer. HPV Test was introduced in August 2019
³Screening for Breast Cancer
[^]Interim numbers due to time-lag from various programmes, and campaign screening numbers are retrieved from SCS clinic and collaborated programmes such as FIT50, Breast Cancer Campaign (BCAM), Community Mammobus Programme (CMP)

PROMOTION OF HEALTHIER LIFESTYLE AND REGULAR SCREENING

In 2019, we reached out to 4,656 attendees in 60 public education talks (excluding schools). With the newfound knowledge in areas of screening, nutrition and cancer prevention talks, 4 in 5 attendees (78.5%) pledged to do more exercise for a healthier lifestyle, more than half (61.6%) of the attendees indicated that they will now go for regular screening and 3 in 8 attendees cited that they will not smoke or will quit smoking.

Among attendeesⁿ who had not gone for a cancer screening before, more than half of them (52.7%) cited that they are now motivated to go for regular screening and exercise (78.3%).

Note: n=3,227 attendees had completed the survey

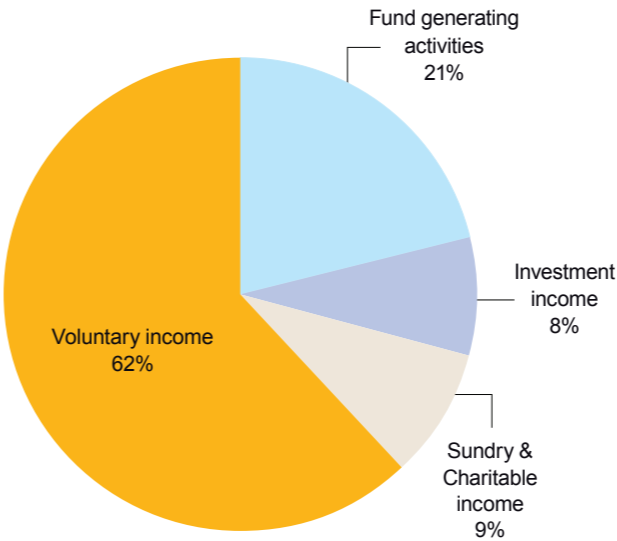


FINANCIAL OVERVIEW

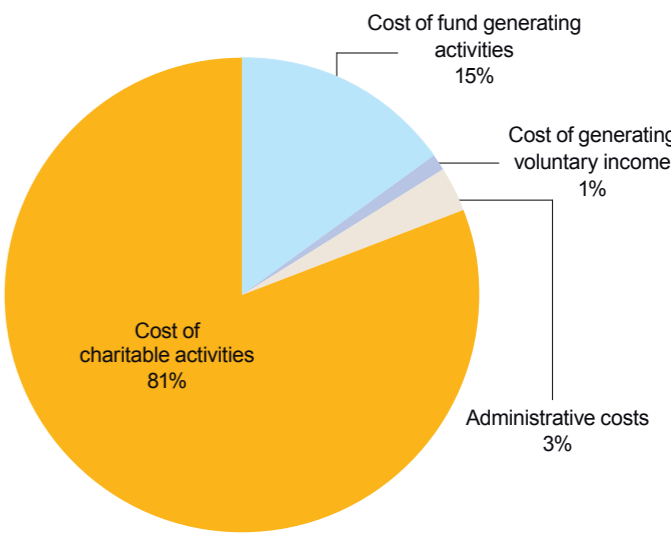
FOR THE YEAR ENDED 31 DECEMBER 2019

	FY 2019	FY 2018
	\$'000	\$'000
Total Income	21,646	20,938
Total Expenses	19,199	18,183
Surplus / (Deficit) for the Reporting Year	2,447	2,755
Total Assets	81,161	76,571
Total Liabilities	6,233	4,746
Total Unrestricted Funds	71,300	68,545
Total Restricted Funds	3,628	3,279

INCOME
FOR THE YEAR (FY 2019)



EXPENSES
FOR THE YEAR (FY 2019)



* The full set of audited financial statements is available at <https://www.singaporecancersociety.org.sg/about/corporate-information/financial-information.html>

CANCER SUPPORT SERVICES

Cancer takes its toll on patients and their families from the moment they are diagnosed till end of life. This is why SCS’ support services have various programmes specifically targeted at cancer survivors, new patients and their families to help them reduce stigma, promote communication and cope with life-changing consequences of cancer.

SCS SUPPORT GROUPS

An essential part of coping lies in finding a support system, the ability to talk and exchange with individuals who understand the emotions linked with coming to grasp with the illness or adjusting to new life situations. SCS support groups offer these platforms to support cancer patients and survivors across all 5 pillars.

EDUCATION	ENGAGEMENT	EMPOWERMENT	ENRICHMENT	PSYCHOLOGICAL SUPPORT
Psychoeducational talks, workshop and other learning platform	Psychosocial-focused engagement and outcome	Training and developing volunteer leaders	Cancer supportive recreational programmes & activities	Professional counselling and therapeutic support



SCS SEMI-COLONS SUPPORT GROUP

This support group helps newly treated colorectal cancer patients adjust to a new quality of life. Through the support of peers, the professional advice of volunteer nurses and stoma therapists, and the talks and presentations on health-related subjects such as nutrition and exercise, patients gain confidence and are guided to independence in the care of their stomas.

SCS REACH TO RECOVERY

This is a breast cancer support group aimed at helping women cope with life challenges. Breast cancer survivors volunteer their time to provide a listening ear and share their experiences in order to help other women achieve a full recovery – cosmetically, physically, emotionally, spiritually and psychologically.

SCS NEW VOICE CLUB

The New Voice Club brings together patients who have lost their voice completely following the removal of their vocal cords due to laryngeal cancer. The club teaches patients how to speak again, with or without speech devices, and emotionally support new patients and their families in coping with a ‘new voice’ after surgery – an essential step in regaining the ability to communicate with others.



SCS WALNUT WARRIORS

This group helps men diagnosed with prostate cancer enhance their well-being through therapeutic and enrichment programmes. Through sharing personal experiences and exchanging insights into coping with the condition, as well as recreational workshops, social events and enrichment learning sessions, members feel supported in transitioning to their new lives.

SCS BISHANA LADIES SUPPORT GROUP

Bishana invites female survivors and cancer-diagnosed women to monthly meetings, educational talks/workshops, social and recreational activities, outings, and enrichment programmes. This support group provides a platform for these women to share their experiences and interact with each other to find psychological support and emotional solace, and learn how to cope with the changes brought about by this illness.

PSYCHOSOCIAL SERVICES

Social workers, counsellors and therapists help patients cope with the fear and strong emotions that may result from diagnosis and treatment by bridging patients, caregivers and family members to pertinent information, financial resources and therapeutic groups. Each year, SCS empowers its teams with new skills to enhance capabilities and effectively manage beneficiaries’ needs.

CASEWORK & COUNSELLING

Our team of social workers and counsellors seek to help individuals and families cope with the impact of cancer, loss, and bereavement, as well as to facilitate discussion on decision-making, care plans and survivorship goals among family members and healthcare providers.

ART THERAPY PROGRAMME

This programme aims to facilitate emotional well-being through art, which provides an alternative form of self-expression when words are inadequate. Using images and symbols becomes a powerful tool for participants to tell their stories and express their emotions (e.g. pain, desires, sense of loss, self-image).



SCS ENRICHMENT PROGRAMMES

SCS enrichment programmes provide SCS Support Group Members, Caregivers, and Volunteer-Trainers, multilateral opportunities to bond and share talents and pursuits.



SCS LOOK GOOD FEEL BETTER PROGRAMME

The Look Good Feel Better (LGFB) programme helps female cancer patients cope with the effects of treatments, such as hair loss and skin discolouration, by helping them improve their appearance and regain their self-esteem through hands-on workshops teaching make-up techniques or how to wear wigs, hats and scarves.



SCS CANCER REHABILITATION SERVICES

Into its fourth year of operations, the SCS Cancer Rehabilitation Centre (CRC) located at Jem Office Tower saw exponential growth in the number of clients served. Dietician and speech therapy services were introduced, along with various updates of rehabilitation programmes to better address cancer-related impairments, thereby increasing the centre's capacity to serve more clients.



Usually, I am an optimistic person. But hearing about my stage 1 breast cancer was devastating. The staff at the CRC are very efficient and engaging. The therapist is able to explain to me in detail on how to improve my condition. Her encouragement meant a lot to me. I am so glad that I was introduced to this place.

Mdm Tan Guat Lay, SCS Cancer Rehabilitation Centre Client



NUMBER OF PATIENTS

Cancer Rehabilitation Services	2019	2018
New referrals	347	275
Clients enrolled in Active Rehabilitation (formerly Specialised Rehabilitation Programme)	225	175
Clients served for Lymphedema	158	76
Clients transited to ActiveSG gyms	81	24

HIGHLIGHTS AND ACHIEVEMENTS

- Client referrals and admission continue to increase in 2019.
- The Ministry of Health (MOH) granted SCS **Subvention for Cancer Rehabilitation Services**. In conjunction with the MOH subvention, a fee structure was introduced in November which includes high subsidies for cancer patients plus additional financial assistance for very needy cases.
- **CARE NAVIGATION** commenced in May 2019. To date, the team has provided care plans to 77 clients, resulting in 97 referrals for rehabilitation service, psychosocial support, welfare assistance and external services such as financial assistance and support groups from hospitals. Care navigation has also been introduced in the care pathway for breast cancer patients at the National University Cancer Institute, Singapore since mid-September, with plans to extend to the care pathway for colorectal cancer.
- **NUTRITION FORWARD SPECIAL INTEREST GROUP** was formed to empower a group of cancer survivors receiving dietetic care to develop confidence and skill in nutritional cooking.
- **FATIGUE MANAGEMENT**, a new occupational therapy programme was introduced. This helps clients identify their fatigue and develop lifestyle changes and strategies to overcome or cope with their tiredness, so that their quality of life can be improved.
- SCS collaborated with Sport Singapore for patients to flow seamlessly from the hospital to continued care in the community. 81 clients were discharged from rehabilitation programmes and transited to three designated ActiveSG gyms to continue an active lifestyle after completing SCS cancer rehabilitation programmes. Results show that almost 40% of these clients continued to exercise very regularly and another 25% visited the gym between 1 to 4 times a month.
- A booklet and a series of accompanying videos were developed to help clients continue to exercise at home using resistance bands.
- SCS piloted a therapeutic closed-group work, **L.I.G.H.T GROUPWORK** for 7 advanced stage cancer patients over 4 sessions between November to December 2019. The groupwork adapted elements from Satir Transformation Systems Therapy and the Eastern Body-Mind-Spirit approach, with aims to address the above concerns and to build social support between participants.



FINANCIAL CARE SERVICES

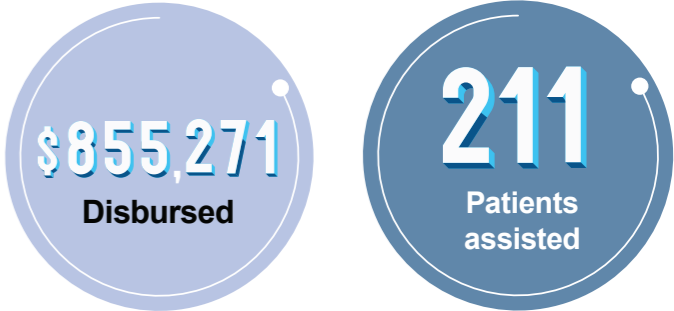
SCS provides a range of financial assistance and support to Singaporeans and PRs from low and middle-income families to alleviate the costs of treatment at every stage and provisions of milk, diapers, medical dressing, stoma bags and other medical equipment. More than \$3.28 million in aid was disbursed in 2019 through the following funds.

SCS CANCER TREATMENT FUND

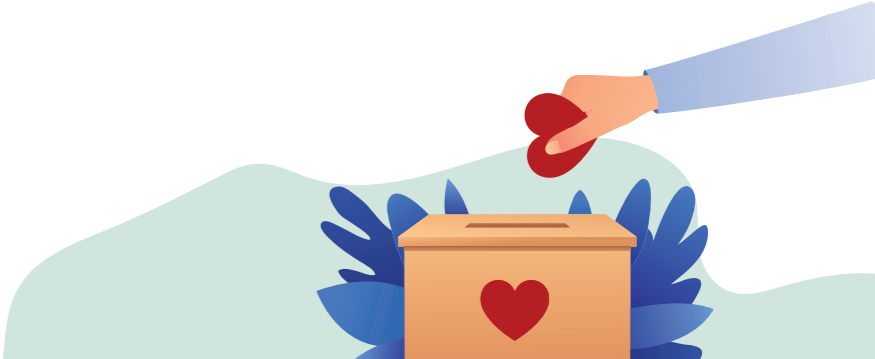
The SCS Cancer Treatment Fund was established in 2005 to provide cancer treatment subsidies to patients experiencing financial difficulties. Patients are referred by their doctors or medical social workers from various restructured hospitals.

Since its inception, \$17,693,580 in aid was disbursed, and 5,266 patients assisted.

Partnering key players in the pharmaceutical industry, SCS has been able to give patients access to critical medicine through the Patient Access Programme (PAP):



- | | |
|--|---|
| SCS-Takeda PAP on Adcetris (Brentuximab) | SCS-Merck PAP on Erbitux (Cetuximab) |
| SCS-Novartis PAP on Jakavi (Ruxolitinib), Tasigna (Nilotinib), Zykadia (Ceritinib), Afinitor (Everolimus) | SCS-MSD Enhanced PAP on Keytruda (Pembrolizumab) 200mg per treatment cycles applies only after 1st tier funding on KeytrudaPAP at restructured hospitals |
| SCS-Roche PAP on Herceptin (Trastuzumab) and Avastin (Bevacizumab) | |



SCS WELFARE AID FUND

The Welfare Aid Fund was established in 1964 to aid cancer patients and their families with temporary financial aid and sustenance during and after treatment to mitigate the financial strain which may arise from unemployment, loss of income, and hefty treatment costs. This fund was later extended with the inclusion of provisions such as milk, diapers, medical supplies, stoma bags and other medical equipment to patients. Welfare aid funding is accessed through medical social workers and healthcare professionals at various hospitals, hospices, and voluntary welfare organisations.

441

Patients assisted

\$1,063,534

Disbursed

1967

SCS' first Welfare sub-committee was set up to provide financial help to cancer patients

SCS CANCER CARE FUND

The SCS Cancer Care Fund is a one-time financial assistance scheme that aims to provide for the immediate needs of patients from low and middle-income families within the first 6 months of diagnosis. Since its inception in 2015, more than \$4,503,450 has been disbursed to 4,982 cancer patients.

1,079

Patients assisted

\$992,500

Disbursed

SCS HOME-HOSPITAL TRANSPORTATION SERVICE

SCS provides home-hospital transportation to and from all restructured hospitals for patients from low-income families who have medical appointments or radiotherapy/chemotherapy sessions.

The Society also provides hospital transportation via private ambulances to beneficiaries who are wheelchair-bound or have mobility difficulties.

286

Patients served

2,093

Round trips made

SUPPORTING CHILDREN AND YOUTH

SCS HELP THE CHILDREN & YOUTH PROGRAMME

\$308,066

Disbursed

45

SCS Achievement Award Recipients

197

Children/Youths and their families attended family and youth engagement programmes

51

Students for Tuition Programme

Over the past 11 years, SCS has disbursed more than \$3 million. A total of 532 students benefitted from the SCS Tuition Programme, 241 students received the SCS Achievement Awards, 483 students received the SCS School Allowance Schemes, 20 students received Bursary Awards and 1,391 children/youths and their family members attended the family and youth engagement programmes.

Since 2009, SCS has set up various programmes under the Help the Children and Youth Programme (HCYP) with support from Singtel and their annual pledge of \$250,000.

These programmes engage children and youths to improve their lives under the guidance of tutors who act as point of contact, providing timely feedback to parents and/or SCS caseworkers regarding the student and his/her family development as well as other concerns that might require intervention.

THE SCS YOUTH CLUB

The SCS Youth Club offers youths with opportunities for personal growth and development. This initiative equips youths with the knowledge, attitudes and skills to manage a wide range of life experiences, such as to recognise and manage emotions; to develop care and concern for others; to establish positive relationships; to make responsible decisions; and to handle challenging situations constructively and ethically. This platform also promotes volunteerism among youths impacted by cancer to connect and contribute back to SCS or the community at large.

SCS HOSPICE CARE SERVICES

SUPPORTING CANCER PATIENTS AT THE END OF THEIR JOURNEY

2019 HIGHLIGHTS

- **NATIONAL LEVEL INITIATIVES (MINIMUM DATA SET AND CAREGIVER SURVEY):**
In support of the Singapore Hospice Council (SHC), SCS responded to their call to participate in two of their national level initiatives.

1. **Minimum Data Set (MDS):** SCS provided anonymised demographical data of our patients over the past year, contributing to what we hope will be the birth of a National Palliative Registry in the long run, which will have a profound impact on the creation and funding of palliative care programmes on a nationwide scale.

2. **Caregiver Survey:** This is a pilot survey initiated by SHC to obtain from bereaved caregivers feedback on the quality of palliative care received by their deceased loved ones. The aim is to have this survey as the national standard in assessing the quality of palliative care delivery from the point of view of the caregiver. With that vision in mind, we have incorporated our existing bereaved caregiver survey into this SHC pilot, and are currently into the second iteration of this pilot survey.
- **HOME-BASED RESPITE CARE (HBRC) PROGRAMME (2019):** This collaboration between the Ministry of Health (MOH), the Agency for Integrated Care (AIC) and their community homecare partners is a new iteration of Interim Care Services for End-of-Life Care (ICS-EOL). Targeting patients from needy families who wish to stay at home, this programme provides trained caregivers to support and guide them in their final days. The criteria for admission to this programme has been broadened to terminally ill patients with a life expectancy of 12 months or less, and an increase in the total number of caregiving hours provided for.
- **WORLD HOSPICE DAY ROADSHOW (2019):** A consistent supporter for several years, SCS once again set up a booth at this event organised by SHC. The theme of the event focused on caregivers. Two live sharings were conducted by caregivers of previous SCS patients, facilitated by the SCS team.

- **Voices of My HeART @ *SCAPE (2019):** This is the first roadshow organised by SHC in the form of a community arts engagement programme. It represents an innovative and daring attempt to engage the young (and young-at-heart) on issues related to palliative care, in the hope that they will take that message home to their older loved ones. The programme featured several arts engagement activities, stage performances, and a songwriting competition. SCS contributed by setting up an interactive arts booth. SCS is proud to be involved in SHC’s first foray into the community arts scene, and had lots of fun in the process too.
- **AUDIT ON THE NATIONAL GUIDELINES ON PALLIATIVE CARE (2019):** A biennial clinical audit of SCS Hospice Care Services officially took place in the last quarter of 2019, funded by MOH and supported by SHC.

2019 STATISTICS OF SCS HOSPICE CARE SERVICES

New Patient Referrals Accepted	304
Total Patients Death at Home for 2019	162
Number of Patients Served	465



The team brought a lot of comfort and reassurance to me and my family. They are very compassionate, patient, empathetic and supportive. The support they give is not only to me but also to my children. This puts me at ease and gives me a peace of mind. My greatest wish at this stage is to be at home, and they made it possible.

The late Mdm Lily Baey, Past client of SCS Hospice Care Services



TOGETHER AGAINST CANCER

2019 saw some new initiatives of events and programmes. SCS would like to express its immense gratitude to all the volunteers and benefactors who walked this journey with patients and participated in making care and support available to them.

SCS-TALKMED RELAY FOR LIFE 2019

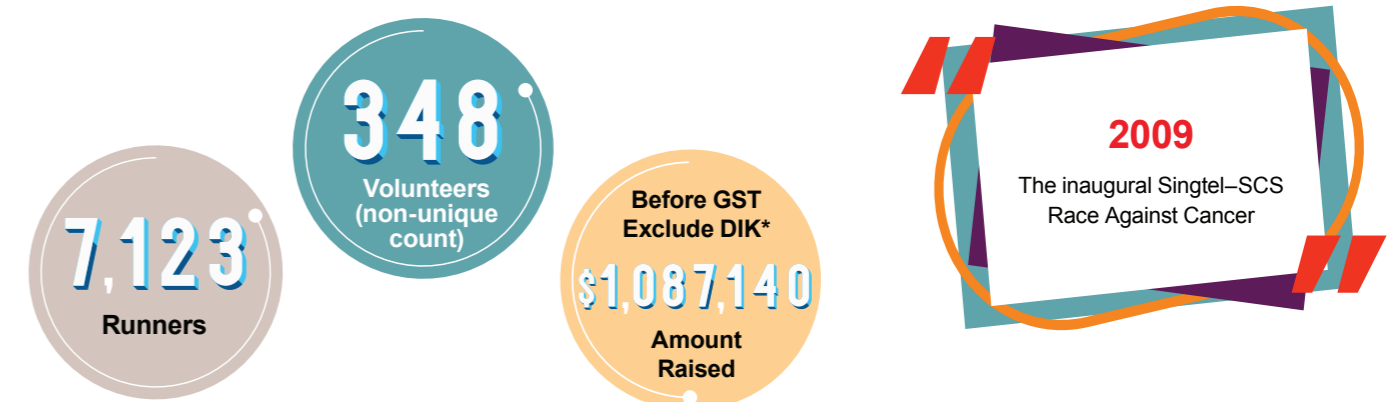


Held from 2 to 3 March at the National Stadium, the SCS-TalkMed Relay for Life (RFL) gathered participants from the community to come together in solidarity and bring hope, inspiration and funds to those impacted by cancer. The event provided a platform to CELEBRATE cancer battles won by survivors and caregivers; REMEMBER loved ones lost to cancer; and actively FIGHT BACK against cancer.

President Halimah Yacob was the Guest of Honour for the CELEBRATE segment, while Ms Grace Fu Hai Yien, Minister for Culture, Community and Youth, was the Guest of Honour for the FIGHT BACK segment.



SINGTEL-SCS RACE AGAINST CANCER 2019



Marking its 11th anniversary in 2019, the Singtel-Singapore Cancer Society Race against Cancer (RAC) 2019 saw over 7,600 participants (runners, volunteers, CEOs Against Cancer and Charity RACers) rally together in our fight against cancer. There was a special 5.5km fun run category in commemoration of SCS' 55th anniversary.

RESULTS

\$58,386 raised from the personal fundraising campaigns of 10 senior executives who participated in the "CEOs Against Cancer" segment

\$250,000 donated to SCS Help the Children and Youth Programme through the Singtel Touching Lives Fund



What I go through to train for the race is nothing compared to what cancer patients go through in their lives. They are mentally tough going through the treatments and staying positive to persevere on in life. It is inspiring to see cancer survivors participate in the run, living their lives to the fullest as anyone else can.

Neyton Tan Tin Wei, Participating in RAC as 'Spiderman' for the past 4 years



*DIK: Donation in kind



**SINGAPORE
CANCER
SOCIETY**

SINGAPORE CANCER SOCIETY

EMAIL: ENQUIRY@SINGAPORECANCERSOCIETY.ORG.SG

WEBSITE: WWW.SINGAPORECANCERSOCIETY.ORG.SG

HOTLINE: 1800-SCS(727)-3333

FOLLOW SGCANCERSOCIETY ON

